



**Fisher BioReagents®**

# Fisher Bioreagents for Electrophoresis

The Fisher Bioreagents range of products provides a comprehensive, high quality range of conveniently packaged reagents for electrophoresis of DNA/RNA and protein.



## Gel matrices

### Agarose

Catalogue No	Description	Quantity	Price
167-916022	Agarose, genetic analysis grade >1000bp	100g	1150:-
167-916024	Agarose, genetic analysis grade >1000bp	500g	4800:-
167-916094	Agarose, molecular biology grade >1000bp	100g	1190:-
167-916096	Agarose, molecular biology grade >1000bp	500g	5060:-
167-923826	Agarose, PCR grade <100bp	100g	2660:-

### Acrylamide/bis-acrylamide

Catalogue No	Description	Quantity	Price
167-916036	Acrylamide/bis-acrylamide 19:1 40% solution	1L	1180:-
167-916038	Acrylamide/bis-acrylamide 29:1 40% solution	1L	1160:-
167-916040	Acrylamide/bis-acrylamide 37.5:1 40% solution	1L	1200:-
167-916032	Acrylamide 40% solution	1L	1330:-
167-916034	Bis-acrylamide 2% solution	250mL	537:-

## Electrophoresis Buffers

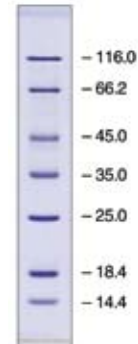
Catalogue No	Description	Quantity	Price
167-923728	Tris-Acetate-EDTA, TAE (50x solution)	1L	705:-
167-925004	Tris-Acetate-EDTA, TAE (50x solution)	4L	2230:-
167-916012	Tris-Borate-EDTA, TBE (10x solution)	1L	389:-
167-925006	Tris-Borate-EDTA, TBE (10x solution)	4L	977:-
167-916020	Tris-Glycine-SDS, 10x solution	1L	729:-
167-925036	Tris-Glycine-SDS, 10x solution	4L	1590:-

## Electrophoresis markers

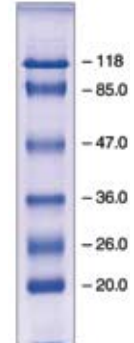
### Protein markers

Catalogue No	Description	Quantity	Price
167-924686	EZ-Run protein marker (7 bands, 14.4-116kDa), 100 lanes	0.5mL	577:-
167-924682	EZ-Run prestained protein marker (7 bands, 20-118kDa), 100 lanes	0.5mL	768:-
167-924678	EZ-Run Recombinant protein marker (14 bands, 10-200kDa), 100 lanes	0.5mL	1020:-
167-924674	EZ-Run Recombinant prestained protein marker (10 bands, 10-170kDa), 100 lanes	0.5mL	1030:-

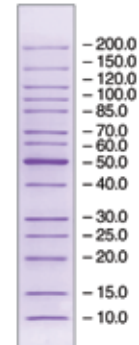
167-924686



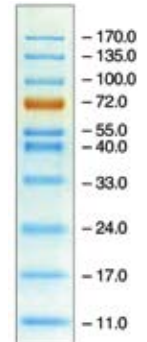
167-924682



167-924678



167-924674



## DNA ladders

Catalogue No	Description	Quantity	Price
167-924200	50bp exACTGene mini DNA ladder (14 bands, 25-650bp), 100 lanes	1mL	1630:-
167-924188	100bp exACTGene PCR DNA ladder (12 bands, 25-1000bp), 100 lanes	1mL	1580:-
167-924230	Low range plus exACTGene DNA ladder (11 bands, 100-2000bp), 100 lanes	1mL	1570:-
167-924194	1Kb exACTGene DNA ladder (13 bands, 300-10000bp), 100 lanes	1mL	1660:-
167-924198	24Kb Max exACTGene DNA ladder (15 bands, 300-24000bp), 100 lanes	1mL	741:-

## Sample loading buffers

Catalogue No	Description	Quantity	Price
167-916304	5x Glycerol gel loading dye for DNA/RNA	5mL	851:-
167-924668	2x SDS-PAGE protein gel loading dye	5mL	473:-
167-924768	3x Sequencing gel-loading buffer (98% Formamide)	5mL	789:-
167-924886	5x Sucrose Gel-loading dye for DNA	5mL	720:-

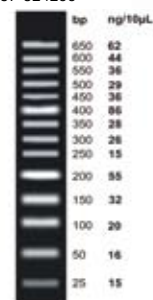
## Electrophoresis stains

Catalogue No	Description	Quantity	Price
167-924176	Ethidium Bromide 1% solution	10mL	373:-
167-925076	Ethidium Bromide 0.625mg/mL solution in dropper bottle	10mL	445:-
167-915974	Brilliant blue (Coomassie blue) R250	25g	499:-
167-915970	Brilliant blue (Coomassie blue) G250	25g	745:-
167-924670	EZ run ready to use protein stain solution (Coomassie blue G250)	1L	1180:-

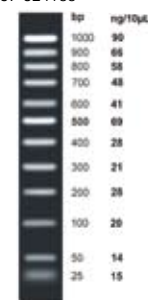
## Miscellaneous Electrophoresis reagents

Catalogue No	Description	Quantity	Price
167-916162	Ammonium persulphate	25g	166:-
167-925078	Ammonium Persulphate tablets, 100mg	100 tablets	405:-
167-915992	Bromophenol blue	25g	571:-
167-925080	Ethidium Bromide destaining bags	10 bags	510:-
167-916282	Formaldehyde 37% w/v	25mL	286:-
167-916284	Formaldehyde 37% w/v	500mL	415:-
167-681927	Formamide super pure	100mL	533:-
167-924636	Ponceau S (C.I.27195)	10g	287:-
167-924760	Sodium Dodecyl sulphate, 10% solution	200mL	309:-
167-923430	Sodium Dodecyl sulphate, 20% solution	200mL	480:-
167-916070	TEMED	20g	335:-
167-916122	Urea molecular biology grade	500g	244:-
167-916288	Xylene cyanol	10g	926:-

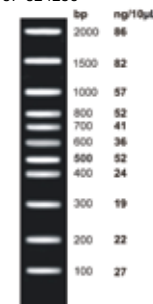
167-924200



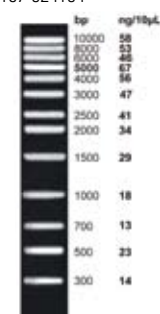
167-924188



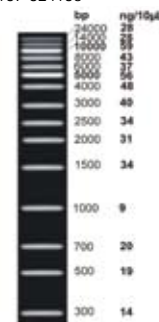
167-924230



167-924194



167-924198



### Terms and Conditions

Please note that all sales are subject to our standard terms and conditions. Full details can be found on our website [www.fishersci.se](http://www.fishersci.se)



**Fisher Scientific**  
Part of Thermo Fisher Scientific

For Customer Service, call 031 - 352 32 00  
To fax an order, use 031 -352 32 50  
To order online: [www.fishersci.se](http://www.fishersci.se)  
Email: [fisher.se@thermofisher.com](mailto:fisher.se@thermofisher.com)

Fisher Scientific  
Box 9193  
400 94 Göteborg

©2009 Thermo Fisher Scientific Inc. All rights reserved