

Now sold as  
Thermo Scientific

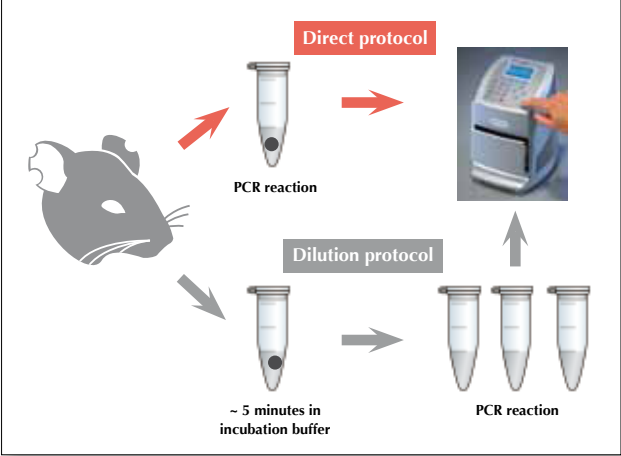
# Phire<sup>®</sup> Animal Tissue Direct PCR Kit



## Amplify DNA directly from tissues of various animal species

Finzymes' Phire<sup>®</sup> Animal Tissue Direct PCR Kit has been developed for amplification of DNA directly from a wide variety of animal tissues including mice, fish, birds and insects. No DNA isolation is required prior to PCR. The kit is based on Phire<sup>®</sup> Hot Start II DNA Polymerase, a specially engineered enzyme with a DNA binding domain. The unique features of this DNA polymerase make it extremely robust and tolerant of many PCR inhibitors present in unpurified animal tissues. This kit contains all the necessary components for amplification of DNA directly from animal tissues: optimized reagents, sampling tools and DNARElease<sup>™</sup> Additive, which can be used to improve the release of DNA from animal tissues. In addition, the kit includes control primers that can be used with numerous animal species. When combined with Finzymes' Piko<sup>®</sup> Thermal Cycler and UTW<sup>®</sup> vessels, PCR protocols can be completed in as little as 30 minutes.

## Two short and simple protocols

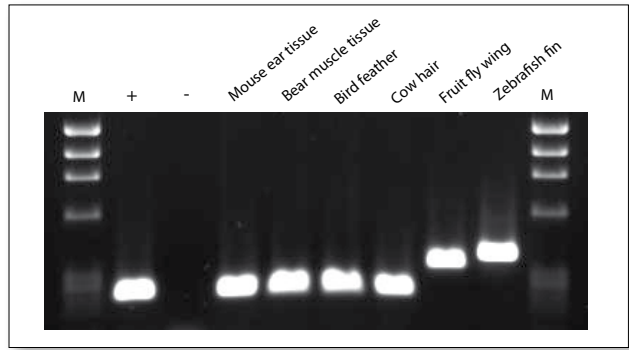


**Two alternative protocols suitable for various purposes.** In the direct protocol, a small piece of animal tissue is placed directly into the PCR reaction. In the dilution protocol, a small amount of animal tissue is first briefly incubated in incubation buffer and 1 µl of this buffer is then added into the PCR reaction. The dilution protocol is useful if several PCR reactions are performed from the same sample, for example.

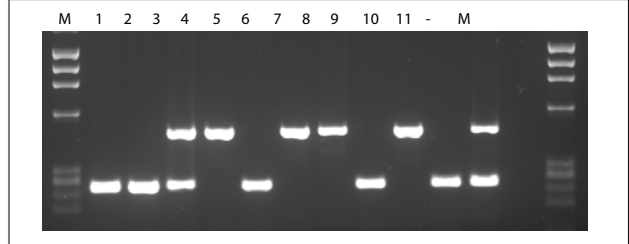
## Advantages

- No need for time-consuming DNA extraction
- Phire Hot Start II DNA Polymerase delivers high inhibitor tolerance, specificity and high yields
- Fast and simple protocols require minimal hands-on time
- Very little sample material required
- Compatible with tissues from various animal species, including mice, fish and insects (see [www.finnyzymes.com/directpcr](http://www.finnyzymes.com/directpcr))

## Fast and reliable PCR from various tissue samples from a number of species



**Direct PCR from various animal tissues.** Small samples of various animal tissues were placed directly into 50 µl PCR reactions. A specific DNA fragment was amplified with control primers included in the kit or, in the case of fruit fly and zebrafish, using control primers whose sequences are provided at Finnyzymes website. + and - denote control reactions with or without purified DNA.



**Genotyping F2 transgenic mice.** 0.50 mm punches of mouse ear tissue were placed directly into 50 µl PCR reactions. Two sets of primers were used in each reaction to genotype the 11 individual mice. The larger fragment was 490 bp (transgenic) and the smaller fragment 250 bp (wildtype).

## Ordering information

Phire <sup>®</sup> Animal Tissue Direct PCR Kit	
F-140	200 reactions (50 µl each)

DNARElease<sup>™</sup>, Phire<sup>®</sup>, Piko<sup>®</sup> and UTW<sup>®</sup> are trademarks or registered trademarks of Finnyzymes Oy or its affiliates. The quality system of Finnyzymes Oy is certified according to standard SFS-EN ISO9001:2008. BN0607104



For Customer Service, call 031 - 352 32 00  
To fax an order, use 031 - 352 32 50  
To order online: [www.fishersci.se](http://www.fishersci.se)  
Email: [fisher.se@thermofisher.com](mailto:fisher.se@thermofisher.com)

Fisher Scientific  
Södra Långebergsgatan 30  
421 32 Västra Frölunda  
©2010 Thermo Fisher Scientific Inc. All rights reserved

